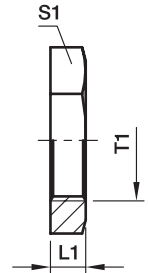


GM Locknut for bulk heads

For bulkhead SV and WSV

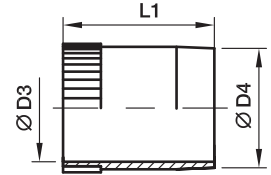


Series	Tube O.D.	T1	L1	S1	Weight g/1 piece	Order code			
						Steel CF	Steel A3C	Stainless Steel 71	Brass MS
L ³⁾	06	M 12×1.5	6	17	7	GM06LCFX	GM06LA3CX	GM06L71X	GM06LMSX
	08	M 14×1.5	6	19	8	GM08LCFX	GM08LA3CX	GM08L71X	GM08LMSX
	10	M 16×1.5	6	22	11	GM10LCFX	GM10LA3CX	GM10L71X	GM10LMSX
	12	M 18×1.5	6	24	12	GM12LCFX	GM12LA3CX	GM12L71X	GM12LMSX
	15	M 22×1.5	7	30	23	GM15LCFX	GM15LA3CX	GM15L71X	GM15LMSX
	18	M 26×1.5	8	36	37	GM18LCFX	GM18LA3CX	GM18L71X	GM18LMSX
	22	M 30×2	8	41	46	GM22LCFX	GM22LA3CX	GM22L71X	GM22LMSX
	28	M 36×2	9	46	58	GM28LCFX	GM28LA3CX	GM28L71X	GM28LMSX
	35	M 45×2	9	55	71	GM35LCFX	GM35LA3CX	GM35L71X	GM35LMSX
	42	M 52×2	10	65	123	GM42LCFX	GM42LA3CX	GM42L71X	GM42LMSX
S ⁴⁾	06	M 14×1.5	6	19	8	GM08LCFX	GM08LA3CX	GM08L71X	GM06LMSX
	08	M 16×1.5	6	22	11	GM10LCFX	GM10LA3CX	GM10L71X	GM10LMSX
	10	M 18×1.5	6	24	12	GM12LCFX	GM12LA3CX	GM12L71X	GM12LMSX
	12	M 20×1.5	6	27	15	GM12SCFX	GM12SA3CX	GM12S71X	GM12SMSX
	14	M 22×1.5	7	30	23	GM15LCFX	GM15LA3CX	GM15L71X	GM15LMSX
	16	M 24×1.5	7	32	24	GM16SCFX	GM16SA3CX	GM16S71X	GM16SMSX
	20	M 30×2	8	41	46	GM22LCFX	GM22LA3CX	GM22L71X	GM22LMSX
	25	M 36×2	9	46	58	GM28LCFX	GM28LA3CX	GM28L71X	GM28LMSX
	30	M 42×2	9	50	58	GM30SCFX	GM30SA3CX	GM30S71X	GM30SMSX
	38	M 52×2	10	65	123	GM42LCFX	GM42LA3CX	GM42L71X	GM42LMSX

³⁾ L = light series; ⁴⁾ S = heavy series

VH Support sleeve

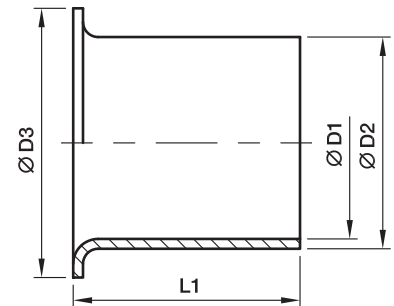
for thin-walled metal tubing



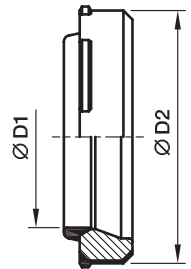
Tube I.D.	D3	D4	L1	Weight g/1 piece	Order code			
					Steel CF	Steel A3C	Stainless Steel 71	Brass MS
4.0	2.6	3.8	14.0	0.7	VH04CFX	VH04A3CX	VH0471X	VH04MSX
4.5	3.1	4.3	14.0	0.8	VH04.5CFX	VH04.5A3CX	VH04.571X	VH04.5MSX
5.0	3.6	4.8	14.0	0.8	VH05CFX	VH05A3CX	VH0571X	VH05MSX
6.0	4.6	5.8	14.0	1.0	VH06CFX	VH06A3CX	VH0671X	VH06MSX
6.5	5.1	6.3	14.0	1.0	VH06.5CFX	VH06.5A3CX	VH06.571X	VH06.5MSX
7.0	5.6	6.8	15.5	1.3	VH07CFX	VH07A3CX	VH0771X	VH07MSX
8.0	6.6	7.8	15.5	1.6	VH08CFX	VH08A3CX	VH0871X	VH08MSX
9.0	7.6	8.8	15.5	1.8	VH09CFX	VH09A3CX	VH0971X	VH09MSX
10.0	8.6	9.8	15.5	2.1	VH10CFX	VH10A3CX	VH1071X	VH10MSX
10.5	9.1	10.3	15.5	2.3	VH10.5CFX	VH10.5A3CX	VH10.571X	VH10.5MSX
11.0	9.6	10.8	15.5	2.6	VH11CFX	VH11A3CX	VH1171X	VH11MSX
12.0	10.2	11.8	17.0	3.7	VH12CFX	VH12A3CX	VH1271X	VH12MSX
13.0	11.2	12.8	17.0	3.9	VH13CFX	VH13A3CX	VH1371X	VH13MSX
14.0	12.2	13.8	17.0	4.3	VH14CFX	VH14A3CX	VH1471X	VH14MSX
15.0	13.2	14.8	20.0	5.7	VH15CFX	VH15A3CX	VH1571X	VH15MSX
16.0	14.2	15.8	20.0	5.8	VH16CFX	VH16A3CX	VH1671X	VH16MSX
17.0	15.2	16.8	20.0	6.3	VH17CFX	VH17A3CX	VH1771X	VH17MSX
18.0	16.2	17.8	20.0	6.3	VH18CFX	VH18A3CX	VH1871X	VH18MSX
19.0	17.2	18.8	16.0	5.8	VH19CFX	VH19A3CX	VH1971X	VH19MSX
20.0	18.2	19.8	21.5	7.9	VH20CFX	VH20A3CX	VH2071X	VH20MSX
21.0	19.2	20.8	21.5	8.0	VH21CFX	VH21A3CX	VH2171X	VH21MSX
22.0	20.2	21.8	23.5	9.7	VH22CFX	VH22A3CX	VH2271X	VH22MSX
23.0	21.2	22.8	23.5	10.6	VH23CFX	VH23A3CX	VH2371X	VH23MSX
24.0	22.2	23.8	23.5	11.1	VH24CFX	VH24A3CX	VH2471CX	VH24MSX
25.0	23.2	24.8	23.5	10.8	VH25CFX	VH25A3CX	VH2571X	VH25MSX
26.0	24.2	25.8	23.5	12.7	VH26CFX	VH26A3CX	VH2671X	VH26MSX
27.0	25.2	26.8	23.5	12.2	VH27CFX	VH27A3CX	VH2771X	VH27MSX
30.0	27.8	29.8	26.5	18.7	VH30CFX	VH30A3CX	VH3071X	VH30MSX
31.0	28.8	30.8	26.5	20.7	VH31CFX	VH31A3CX	VH3171X	VH31MSX
32.0	29.8	31.8	26.5	19.2	VH32CFX	VH32A3CX	VH3271X	VH32MSX
33.0	30.8	32.8	26.5	19.9	VH33CFX	VH33A3CX	VH3371X	VH33MSX
34.0	31.8	33.8	26.5	26.5	VH34CFX	VH34A3CX	VH3471X	VH34MSX
38.0	35.8	37.8	21.0	19.7	VH38CFX	VH38A3CX	VH3871X	VH38MSX
39.0	36.8	38.8	21.0	19.5	VH39CFX	VH39A3CX	VH3971X	VH39MSX

E Tube/hose insert

for plastic tubing



Tube O.D.	Tube I.D.	D1	D2	D3	L1	Weight g/1 piece	Order code Brass
04	2.0	1.3	2.0	3.5	8	1	E04/02X
04	2.5	1.7	2.5	4.0	8	1	E04/2.5X
05	3.0	2.2	3.0	5.0	14	1	E0506/03X
06	3.0	2.2	3.0	5.0	14	1	E0506/03X
05	4.0	3.2	4.0	5.0	14	1	E0506/04X
06	4.0	3.2	4.0	5.0	14	1	E0506/04X
08	4.0	3.2	4.0	6.6	14	1	E08/04X
06	5.0	4.0	5.0	6.0	14	1	E06/05X
08	5.0	4.0	5.0	6.0	14	1	E08/05X
10	6.0	5.0	6.0	8.0	15	1	E0810/06X
08	6.0	5.0	6.0	8.0	15	1	E0810/06X
10	8.0	6.7	8.0	10.0	15	1	E10/08X
12	8.0	6.7	8.0	12.0	15	2	E12/08X
12	9.0	7.7	9.0	12.0	15	2	E12/09X
12	10.0	8.7	10.0	12.0	15	2	E1215/10X
15	12.0	10.7	12.0	14.8	15	3	E15/12X
15	12.5	11.2	12.5	14.8	15	3	E1516/12.5X
16	12.5	11.2	12.5	14.8	15	3	E1516/12.5X
18	14.0	12.7	14.0	17.8	15	4	E18/14X
18	16.0	14.7	16.0	17.8	20	4	E1820/16X
20	16.0	14.7	16.0	17.8	20	4	E1820/16X
22	18.0	16.7	18.0	21.8	16	5	E22/18X

DOZ EO-2 Soft sealing ring


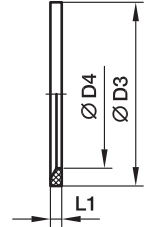
Assembl direction:
Sealing lip shows to the tube end

Series	D1 	D2	Weight g/1 piece	Order code			
				Steel NBR	Steel FKM	Stainless Steel FKM	Stainless Steel NBR
LL ²⁾	04	6.8	1	DOZ04LL	—	—	—
	06	8.8	1	DOZ06LL	—	—	—
L ³⁾	06	10.3	1	DOZ06L	DOZ06LVIT	DOZ06L71	DOZ06LNBR71
	08	12.3	1	DOZ08L	DOZ08LVIT	DOZ08L71	DOZ08LNBR71
	10	14.3	2	DOZ10L	DOZ10LVIT	DOZ10L71	DOZ10LNBR71
	12	16.3	2	DOZ12L	DOZ12LVIT	DOZ12L71	DOZ12LNBR71
	15	20.3	3	DOZ15L	DOZ15LVIT	DOZ15L71	DOZ15LNBR71
	18	24.3	5	DOZ18L	DOZ18LVIT	DOZ18L71	DOZ18LNBR71
	22	27.7	6	DOZ22L	DOZ22LVIT	DOZ22L71	DOZ22LNBR71
	28	33.7	7	DOZ28L	DOZ28LVIT	DOZ28L71	DOZ28LNBR71
	35	42.7	14	DOZ35L	DOZ35LVIT	DOZ35L71	DOZ35LNBR71
	42	49.7	17	DOZ42L	DOZ42LVIT	DOZ42L71	DOZ42LNBR71
	S ⁴⁾	06	12.3	2	DOZ06S	DOZ06SVIT	DOZ06S71
08		14.3	2	DOZ08S	DOZ08SVIT	DOZ08S71	DOZ08SNBR71
10		16.3	3	DOZ10S	DOZ10SVIT	DOZ10S71	DOZ10SNBR71
12		18.3	4	DOZ12S	DOZ12SVIT	DOZ12S71	DOZ12SNBR71
14		20.3	4	DOZ14S	DOZ14SVIT	DOZ14S71	DOZ14SNBR71
16		22.3	5	DOZ16S	DOZ16SVIT	DOZ16S71	DOZ16SNBR71
20		27.7	9	DOZ20S	DOZ20SVIT	DOZ20S71	DOZ20SNBR71
25		33.7	13	DOZ25S	DOZ25SVIT	DOZ25S71	DOZ25SNBR71
30		39.7	18	DOZ30S	DOZ30SVIT	DOZ30S71	DOZ30SNBR71
38		49.7	27	DOZ38S	DOZ38SVIT	DOZ38S71	DOZ38SNBR71

²⁾ LL = very light series; ³⁾ L = light series; ⁴⁾ S = heavy series

ED Eolastic soft seal (for BSPP and metric parallel threads)

For Type: GE...ED, EGE...ED, EVGE...ED, EW...ED, EV...ED, ET...ED, EL...ED,
VSTI...ED, RI...ED

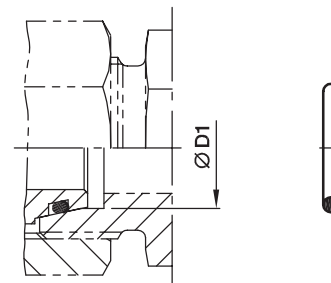


Male stud metric thread T1	Male stud BSP thread T1	D3	D4	L1	Weight g/1 piece	Order code NBR	Order code FKM
M 8×1		9.9	6.5	1.0	0.1	ED8X1X	ED8X1VITX
M 10×1	G 1/8 A	11.9	8.4	1.0	0.1	ED10X1X	ED10X1VITX
M 12×1.5		14.4	9.8	1.5	0.2	ED12X1.5X	ED12X1.5VITX
M 14×1.5	G 1/4 A	16.5	11.6	1.5	0.2	ED14X1.5X	ED14X1.5VITX
M 16×1.5		18.9	13.8	1.5	0.1	ED16X1.5X	ED16X1.5VITX
	G 3/8 A	18.9	14.7	1.5	0.2	ED3/8X	ED3/8VITX
M 18×1.5		20.9	15.7	1.5	0.1	ED18X1.5X	ED18X1.5VITX
M 20×1.5		22.9	17.8	1.5	0.2	ED20X1.5X	ED20X1.5VITX
	G 1/2 A	23.9	18.5	1.5	0.3	ED1/2X	ED1/2VITX
M 22×1.5		24.3	19.6	1.5	0.2	ED22X1.5X	ED22X1.5VITX
M 26×1.5	G 3/4 A	29.2	23.9	1.5	0.4	ED26X1.5X	ED26X1.5VITX
M 27×2	G 3/4 A	29.2	23.9	1.5	0.4	ED26X1.5X	ED26X1.5VITX
M 33×2	G 1 A	35.7	29.7	2.0	0.7	ED33X2X	ED33X2VITX
M 42×2	G 1 1/4 A	45.8	38.8	2.0	0.9	ED42X2X	ED42X2VITX
M 48×2	G 1 1/2 A	50.7	44.7	2.0	1.0	ED48X2X	ED48X2VITX

OR O-Ring for fittings with EO 24° DKO swivel

For Type:

DA, EGE, EGEO, MAVE, EW, EV, ET, EL, RED, GZ, GZR, VKA, VKAM



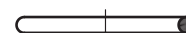
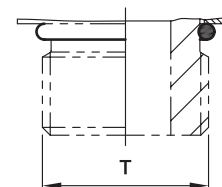
Series	D1 	O-ring NBR Shore-hardness approx. 90	O-ring FKM Shore-hardness approx. 90
L ³⁾	6	OR4.5X1.5X	OR4.5X1.5VITX
	8	OR6.5X1.5X	OR6.5X1.5VITX
	10	OR8X1.5X	OR8X1.5VITX
	12	OR10X1.5X	OR10X1.5VITX
	15	OR12X2X	OR12X2VITX
	18	OR15X2X	OR15X2VITX
	22	OR20X2X	OR20X2VITX
	28	OR26X2X	OR26X2VITX
S ⁴⁾	35	OR32X2.5X	OR32X2.5VITX
	42	OR38X2.5X	OR38X2.5VITX
	6	OR4.5X1.5X	OR4.5X1.5VITX
	8	OR6.5X1.5X	OR6.5X1.5VITX
	10	OR8X1.5X	OR8X1.5VITX
	12	OR10X1.5X	OR10X1.5VITX
	14	OR11X2X	OR11X2VITX
	16	OR13X2X	OR13X2VITX
	20	OR16.3X2.4X	OR16.3X2.4VITX
	25	OR20.3X2.4X	OR20.3X2.4VITX
30	OR25.3X2.4X	OR25.3X2.4VITX	
38	OR33.3X2.4X	OR33.3X2.4VITX	

³⁾ L = light series; ⁴⁾ S = heavy series

OR O-rings for male stud ends

Male metric thread – O-ring (ISO 6149)

Male UN/UNF thread – O-ring (ISO 11926)



Types with metric thread: WEE-OR, TEE-OR, LEE-OR, VEE-OR, VSTI-OR, GEO, EGEO

Thread T	O-ring NBR	O-ring FKM
M8 × 1	OR6.1X1.6	OR6.1X1.6VITX
M10 × 1	OR8.1X1.6	OR8.1X1.6VITX
M12 × 1.5	OR9.3X2.2	OR9.3X2.2VITX
M14 × 1.5	OR11.3X2.2	OR11.3X2.2VITX
M16 × 1.5	OR13.3X2.2	OR13.3X2.2VITX
M18 × 1.5	OR15.3X2.2	OR15.3X2.2VITX
M22 × 1.5	OR19.3X2.2	OR19.3X2.2VITX
M27 × 2	OR23.6X2.9	OR23.6X2.9VITX
M33 × 2	OR29.6X2.9	OR29.6X2.9VITX
M42 × 2	OR38.6X2.9	OR38.6X2.9VITX
M48 × 2	OR44.6X2.9	OR44.6X2.9VITX

Types with UN/UNF thread:

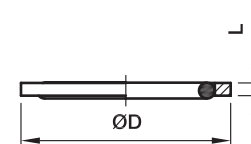
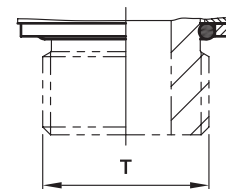
WEE-UNF, TEE-UNF, LEE-UNF, VEE-UNF, GE-UNF

Thread T	O-ring NBR	O-ring FKM
7/16-20 UNF	OR8.92X1.83	OR8.92X1.83VITX
9/16-18 UNF	OR11.89X1.98	OR11.89X1.98VITX
3/4-16 UNF	OR16.36X2.21	OR16.36X2.21VITX
7/8-14 UNF	OR19.18X2.46	OR19.18X2.46VITX
1 1/16-12 UN	OR23.47X2.95	OR23.47X2.95VITX
1 5/16-12 UN	OR29.74X2.95	OR29.74X2.95VITX
1 5/8-12 UN	OR37.46X3	OR37.46X3VITX
1 7/8-12 UN	OR43.69X3	OR43.69X3VITX

OR O-rings and retaining rings for steel male stud ends

Adjustable metric thread – O-ring + retaining ring

Adjustable BSPP thread – O-ring + retaining ring (ISO 1179)



Types with metric thread: WEE-M, TEE-M, LEE-M, VEE-M

Thread T	O-ring NBR	O-ring FKM	D	L	Order code Retaining ring	
					CF	A3C
M10 × 1	OR8X1.88X	OR8X1.88VITX	14.8	1.4	RRSM10CF	RRSM10A3C
M12 × 1.5	OR9.3X2.2X	OR9.3X2.2VITX	17.8	1.6	RRSM12CF	RRSM12A3C
M14 × 1.5	OR11.3X2.2X	OR11.3X2.2VITX	19.8	1.6	RRSM14CF	RRSM14A3C
M16 × 1.5	OR13.3X2.2X	OR13.3X2.2VITX	22.8	1.6	RRSM16CF	RRSM16A3C
M18 × 1.5	OR15.54X2.62X	OR15.54X2.62VITX	24.8	2.1	RRSM18CF	RRSM18A3C
M22 × 1.5	OR19.3X2.2X	OR19.3X2.2VITX	27.8	1.8	RRSM22CF	RRSM22A3C
M27 × 2	OR23X3X	OR23X3VITX	32.8	2.3	RRSM27CF	RRSM27A3C
M33 × 2	OR29.2X3X	OR29.2X3VITX	40.8	2.5	RRSM33CF	RRSM33A3C
M42 × 2	OR37.69X3.53X	OR37.69X3.53VITX	50.8	2.6	RRSM42CF	RRSM42A3C
M48 × 2	OR43.69X3X	OR43.69X3VITX	55.8	2.3	RRSM48CF	RRSM48A3C

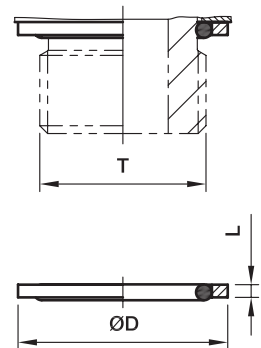
Types with BSPP thread: WEE-R, TEE-R, LEE-R, VEE-R

Thread T	O-ring NBR	O-ring FKM	D	L	Order code Retaining ring	
					CF	A3C
G 1/8 A	OR8X1.88X	OR8X1.88VITX	14.8	1.4	RRS1/8CF	RRS1/8A3C
G 1/4 A	OR10.77X2.62X	OR10.77X2.62VITX	19.8	1.9	RRS1/4CF	RRS1/4A3C
G 3/8 A	OR13.94X2.62X	OR13.94X2.62VITX	22.8	2.0	RRS3/8CF	RRS3/8A3C
G 1/2 A	OR18X3.15X	OR18X3.15VITX	27.8	2.6	RRS1/2CF	RRS1/2A3C
G 3/4 A	OR23X3X	OR23X3VITX	32.8	2.5	RRS3/4CF	RRS3/4A3C
G 1 A	OR29.74X3.53X	OR29.74X3.53VITX	40.8	2.5	RRS1CF	RRS1A3C
G 1 1/4 A	OR37.69X3.53X	OR37.69X3.53VITX	50.8	2.6	RRS1 1/4CF	RRS1 1/4A3C
G 1 1/2 A	OR44.04X3.53X	OR44.04X3.53VITX	55.8	2.6	RRS1 1/2CF	RRS1 1/2A3C

OR O-rings and retaining rings for stainless steel male stud ends

Adjustable metric thread – O-ring + retaining ring

Adjustable BSPP thread – O-ring + retaining ring (ISO 1179)



Types with metric thread: WEE-M, TEE-M, LEE-M, VEE-M

Thread T	O-ring FKM	O-ring NBR	D	L	Order code Retaining ring Stainless Steel
M10 × 1	OR8X1.5VITX	OR8X1.5X	14.8	1.0	RRM10X1SS
M12 × 1.5	OR9.25X1.78VITX	OR9.25X1.78X	17.8	1.3	RRM12X1.5SS
M14 × 1.5	OR11X2VITX	OR11X2X	19.8	1.3	RRM14X1.5SS
M16 × 1.5	OR13.4X2.1VITX	OR13.4X2.1X	21.8	1.5	RRM16X1.5SS
M18 × 1.5	OR15.54X2.62VITX	OR15.54X2.62X	23.8	2.0	RRM18X1.5SS
M22 × 1.5	OR18.77X1.78VITX	OR18.77X1.78X	27.8	1.3	RRM22X1.5SS
M27 × 2	OR23.47X2.62VITX	OR23.47X2.62X	32.8	2.0	RRM27X2SS
M33 × 2	OR29.7X2.8VITX	OR29.7X2.8X	39.8	2.0	RRM33X2SS
M42 × 2	OR37.7X2.62VITX	OR37.7X2.62X	49.8	2.0	RRM42X2SS
M48 × 2	OR44.12X2.62VITX	OR44.12X2.62X	55.0	2.0	RRM48X2SS

Types with parallel thread: WEE-R, TEE-R, LEE-R, VEE-R

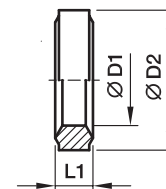
Thread T	O-ring FKM	O-ring NBR	D	L	Order code Retaining ring Stainless Steel
G 1/8 A	OR8X1.88VITX	OR8X1.88X	15.0	1.4	8207SS1/8
G 1/4 A	OR10.77X2.62VITX	OR10.77X2.62X	19.5	1.9	8207SS1/4A
G 3/8 A	OR13.94X2.62VITX	OR13.94X2.62X	23.5	1.9	8207SS3/8A
G 1/2 A	OR17.96X2.62VITX	OR17.96X2.62X	28.5	1.9	8207SS1/2
G 3/4 A	OR23.47X2.62VITX	OR23.47X2.62X	34.5	1.9	8207SS3/4
G 1 A	OR29.74X3.53VITX	OR29.74X3.53X	43.5	2.6	8207SS1A
G 1 1/4 A	OR37.69X3.53VITX	OR37.69X3.53X	52.5	2.6	8207SS1 1/4
G 1 1/2 A	OR44.04X3.53VITX	OR44.04X3.53X	60.0	2.6	8207SS1 1/2

OR O-Rings for banjo fittings WH/TH

For WH / TH	For WH / TH	O-ring NBR	O-ring FKM
06LM/LR		OR9.3X1.5X	OR9.3X1.5VITX
08LM/LR	06SM/SR	OR12.5X1.5X	OR12.5X1.5VITX
10LM/LR	08SM/SR	OR12.5X1.5X	OR12.5X1.5VITX
12LM/LR	10SM/SR	OR16X1.5X	OR16X1.5VITX
	12SR	OR16X1.5X	OR16X1.5VITX
15LM	12SM	OR18X1.5X	OR18X1.5VITX
15LR	14SM/SR	OR20X1.5X	OR20X1.5VITX
18LM/LR	16SM/SR	OR20X1.5X	OR20X1.5VITX
22LM/LR	20SM/SR	OR25X2X	OR25X2VITX
28LM/LR	25SM/SR	OR33X2.5X	OR33X2.5VITX
35LM/LR	30SM/SR	OR41X2.5X	OR41X2.5VITX
42LM/LR	38SM/SR	OR46X3X	OR46X3VITX

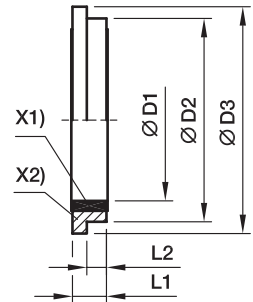
DKI Sealing ring for pressure gauge connectors

Female thread	D1	D2	L1	Weight g/1 piece	Order code		
					Steel CF	Steel A3C	Stainless Steel 71
G 1/4 A	6	11.3	4.5	2.5	DKI1/4CFX	DKI1/4A3CX	DKI1/471X
G 1/2 A	12	18.5	5.0	5.0	DKI1/2CFX	DKI1/2A3CX	DKI1/271X



KDS Soft sealing ring for banjo fittings WH/TH from steel

for small and wide spot faces of ports

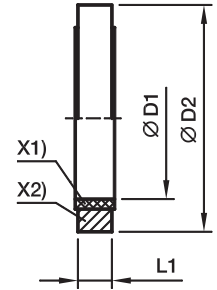


X1) NBR sealing
X2) Supporting-ring (Steel)

For WH and TH	For thread		D1	D2	D3	L1	L2	Weight g/1 piece	Order code Steel/NBR	Order code Steel/FKM
06LM/LRKDS	M10×1	G 1/8 A	10.3	14.9	16.0	2.5	1.1	2	KDS10A3CX	KDS10VITA3CX
06SM/08LMKDS	M12×1.5		12.3	17.0	18.0	3.0	1.6	2	KDS12A3CX	KDS12VITA3CX
06SRKDS	M14×1.5	G 1/4 A	14.3	18.9	20.0	3.0	1.6	2	KDS14A3CX	KDS14VITA3CX
08LR/SM/SRKDS	M14×1.5	G 1/4 A	14.3	18.9	20.0	3.0	1.6	2	KDS14A3CX	KDS14VITA3CX
10LM/LRKDS	M14×1.5	G 1/4 A	14.3	18.9	20.0	3.0	1.6	2	KDS14A3CX	KDS14VITA3CX
10SM/SRKDS	M16×1.5	G 3/8 A	17.0	21.9	24.0	3.0	2.1	3	KDS16A3CX	KDS16VITA3CX
12LM/LR/SRKDS	M16×1.5	G 3/8 A	17.0	21.9	24.0	3.0	2.1	3	KDS16A3CX	KDS16VITA3CX
12SM/15LMKDS	M18×1.5		18.3	23.9	23.9	3.0		4	KDS18A3CX	KDS18VITA3CX
15LRKDS	M22×1.5	G 1/2 A	22.3	26.9	30.0	4.5	2.6	7	KDS22A3CX	KDS22VITA3CX
16SM/SRKDS	M22×1.5	G 1/2 A	22.3	26.9	30.0	4.5	2.6	7	KDS22A3CX	KDS22VITA3CX
18LM/LRKDS	M22×1.5	G 1/2 A	22.3	26.9	30.0	4.5	2.6	7	KDS22A3CX	KDS22VITA3CX
22LMKDS	M26×1.5		26.3	31.9	35.0	3.5	2.6	7	KDS26A3CX	KDS26VITA3CX
20SM/SRKDS	M27×2	G 3/4 A	27.3	32.9	38.0	3.5	2.6	8	KDS27A3CX	KDS27VITA3CX
22LRKDS	M27×2	G 3/4 A	27.3	32.9	38.0	3.5	2.6	8	KDS27A3CX	KDS27VITA3CX
25SM/SRKDS	M33×2	G 1 A	33.6	39.9	42.0	3.5	2.6	10	KDS33A3CX	KDS33VITA3CX
28LM/LRKDS	M33×2	G 1 A	33.6	39.9	42.0	3.5	2.6	10	KDS33A3CX	KDS33VITA3CX
30SM/SRKDS	M42×2	G 1 1/4 A	42.4	49.9	49.9	3.5		12	KDS42A3CX	KDS42VITA3CX
35LM/LRKDS	M42×2	G 1 1/4 A	42.4	49.9	49.9	3.5		12	KDS42A3CX	KDS42VITA3CX
38SM/SRKDS	M48×2	G 1 1/2 A	48.4	55.9	60.0	3.5	2.6	16	KDS48A3CX	KDS48VITA3CX
42LM/LRKDS	M48×2	G 1 1/2 A	48.4	55.9	60.0	3.5	2.6	16	KDS48A3CX	KDS48VITA3CX

KD Soft sealing ring for banjo fittings WH/TH from stainless steel

for wide spot faces of ports

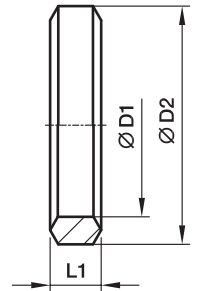


X1) PTFE sealing
X2) Supporting-ring (Stainless Steel)

For WH and TH	For thread	D1	D2	L1	Weight g/1 piece	Order code
06LRKD71	G 1/8 A	10.0	17.0	2.5	2	KD1/871
08LR/06SRKD71	G 1/4 A	13.5	22.0	3.0	4	KD1/471
10LR/08SRKD71	G 1/4 A	13.5	22.0	3.0	4	KD1/471
12LR/10SRKD71	G 3/8 S	17.1	27.0	3.0	6	KD3/871
12SRKD71	G 3/8 A	17.1	27.0	3.0	6	KD3/871
15LR/14SRKD71	G 1/2 A	21.4	32.0	4.5	12	KD1/271
18LR/16SRKD71	G 1/2 A	21.4	32.0	4.5	12	KD1/271
22LR/20SRKD71	G 3/4 A	26.8	41.0	3.5	17	KD3/471
28LR/25SRKD71	G 1 A	33.5	46.0	3.5	17	KD171
35LR/30SRKD71	G 1 1/4 A	42.4	57.0	3.5	26	KD11/471
42LR/38SRKD71	G 1 1/2 A	48.4	64.0	3.5	35	KD11/271
06LMKD71	M 10×1	10.3	17.0	2.5	2	KD1071
08LM/06SMKD71	M 12×1.5	12.3	22.0	3.0	5	KD1271
10LM/08SMKD71	M 14×1.5	14.3	22.5	3.0	5	KD1471
12LM/10SMKD71	M 16×1.5	16.4	27.0	3.0	9	KD1671
15LM/12SMKD71	M 18×1.5	18.4	29.0	3.0	9	KD1871
14SMKD71	M 20×1.5	20.4	32.0	3.0	9	KD2071
18LM/16SMKD71	M 22×1.5	22.4	32.0	4.5	12	KD2271
22LMKD71	M 26×1.5	26.4	41.0	3.5	18	KD2671
20SMKD71	M 27×2	27.4	41.0	3.5	18	KD2771
28LM/25SMKD71	M 33×2	33.5	46.0	3.5	17	KD171
35LM/30SMKD71	M 42×2	42.4	57.0	3.5	26	KD11/471
42LM/38SMKD71	M 48×2	48.4	64.0	3.5	35	KD11/271

DKAZ Sealing ring

for low pressure banjos DSVW

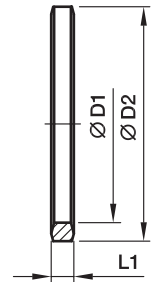


For DSVW		Metric thread parallel	D1	D2	L1	Weight g/1 piece	Order code	
							Steel CF	Steel A3C
06LM		M10×1	10.1	14	3.2	2	DKAZ10CFX	DKAZ10A3CX
08LM	06SM	M12×1.5	12.1	17	4.2	3	DKAZ12CFX	DKAZ12A3CX
10LM	08SM	M14×1.5	14.1	19	4.5	4	DKAZ14CFX	DKAZ14A3CX
12LM	10SM	M16×1.5	16.1	21	4.5	4	DKAZ16CFX	DKAZ16A3CX
15LM	12SM	M18×1.5	18.1	23	4.5	5	DKAZ18CFX	DKAZ18A3CX
	14SM	M20×1.5	20.1	25	4.5	5	DKAZ20CFX	DKAZ20A3CX
18LM	16SM	M22×1.5	22.1	27	4.5	6	DKAZ22CFX	DKAZ22A3CX
22LM		M26×1.5	26.1	31	4.5	7	DKAZ26CFX	DKAZ26A3CX
		M27×2	27.1	32	5.0	8	DKAZ27CFX	DKAZ27A3CX
28LM	20SM	M33×2	33.1	39	6.0	15	DKAZ33CFX	DKAZ33A3CX
35LM	30SM	M42×2	42.1	49	6.5	22	DKAZ11/4CFX	DKAZ11/4A3CX
42LM	38SM	M48×2	48.1	55	6.5	25	DKAZ11/2CFX	DKAZ11/2A3CX

For DSVW		BSPP thread parallel	D1	D2	L1	Weight g/1 piece	Order code	
							Steel CF	Steel A3C
06LR		G1/8A	9.8	14	3.2	2	DKAZ1/8CFX	DKAZ1/8A3CX
08LR/10LR	06SR/08SR	G1/4A	13.3	18	4.5	4	DKAZ1/4CFX	DKAZ1/4A3CX
12LR	10SR/12SR	G3/8A	16.8	22	4.5	5	DKAZ3/8CFX	DKAZ3/8A3CX
15LR/18LR	14SR/16SR	G1/2A	21.1	26	5.0	6	DKAZ1/2CFX	DKAZ1/2A3CX
22LR	20SR	G3/4A	26.6	32	5.0	11	DKAZ3/4CFX	DKAZ3/4A3CX
28LR	25SR	G1A	33.4	39	6.0	14	DKAZ1CFX	DKAZ1A3CX
35LR	30SR	G11/4A	42.1	49	6.5	22	DKAZ11/4CFX	DKAZ11/4A3CX
42LR	38SR	G11/2A	48.1	55	6.5	25	DKAZ11/2CFX	DKAZ11/2A3CX

DKA Sealing ring

for banjo fittings WH/TH and SWVE



WH/TH		For: SWVE		BSPB thread	D1	D2	L1	Weight g/1 piece	Steel CF	Order code Steel A3C	Stainless Steel 71
06LR		04/06/08-LLR	06LR	G 1/8 A	9.8	14	2.5	1	DKA1/8CFX	DKA1/8A3CX	DKA1/871X
08LR	06SR	08LR	06SR	G 1/4 A	13.3	18	3.0	3	DKA1/4CFX	DKA1/4A3CX	DKA1/471X
10LR	08SR	10LR	08SR	G 1/4 A	13.3	18	3.0	3	DKA1/4CFX	DKA1/4A3CX	DKA1/471X
12LR	10SR	12LR	10SR	G 3/8 A	16.8	22	3.0	3	DKA3/8CFX	DKA3/8A3CX	DKA3/871X
	12SR		12SR	G 3/8 A	16.8	22	3.0	3	DKA3/8CFX	DKA3/8A3CX	DKA3/871X
		15/18LR	14/16SR	G 1/2 A	21.1	26	3.0	4	DKA1/2CFX	DKA1/2A3CX	
15LR	14SR			G 1/2 A	21.1	26	4.5	6	DKA1/2X4.5CFX	DKA1/2X4.5A3CX	DKA1/2X4.571X
18LR	16SR			G 1/2 A	21.1	26	4.5	6	DKA1/2X4.5CFX	DKA1/2X4.5A3CX	DKA1/2X4.571X
22LR	20SR	22LR	20SR	G 3/4 A	26.6	32	3.5	6	DKA3/4CFX	DKA3/4A3CX	DKA3/471X
28LR	25SR			G 1 A	33.4	39	3.5	8	DKA1CFX	DKA1A3CX	DKA171X
35LR	30SR			G 1 1/4 A	42.1	49	3.5	12	DKA11/4CFX	DKA11/4A3CX	DKA11/471X
42LR	38SR			G 1 1/2 A	48.1	55	3.5	15	DKA11/2CFX	DKA11/2A3CX	DKA11/271X

WH/TH		For: SWVE		Male stud metric thread	D1	D2	L1	Weight g/1 piece	Steel CF	Order code Steel A3C	Stainless Steel 71
06LM		04LLM	06LM	M 8×1	8.1	12	2.5	1	DKA08CFX	DKA08A3CX	
08LM	06SM	06/08LLM	06SM	M 10×1	10.1	14	3.0	1	DKA10CFX	DKA10A3CX	DKA1071X
10LM	08SM	10LM	08SM	M 12×1.5	12.1	17	3.0	2	DKA12CFX	DKA12A3CX	DKA1271X
12LM	10SM	12LM	10SM	M 14×1.5	14.1	19	3.0	3	DKA14CFX	DKA14A3CX	DKA1471X
				M 16×1.5	16.1	21	3.0	3	DKA16CFX	DKA16A3CX	DKA1671X
15LM	12SM	15LM	12SM	M 18×1.5	18.1	23	3.0	3	DKA18CFX	DKA18A3CX	DKA1871X
	14SM		14-SM	M 20×1.5	20.1	25	3.0	4	DKA20CFX	DKA20A3CX	DKA2071X
		18LM	16SM	M 22×1.5	22.1	27	3.0	4	DKA22CFX	DKA22A3CX	
18LM	16SM			M 22×1.5	22.1	27	4.5	6	DKA22X4.5CFX	DKA22X4.5A3CX	DKA22X4.571X
			22LM	M 26×1.5	26.1	31	3.0	6	DKA26CFX	DKA26A3CX	
22LM		20SM	20SM	M 26×1.5	26.1	31	3.5	6	DKA26X3.5CFX	DKA26X3.5A3CX	DKA26X3.571X
				M 27×2	27.1	32	3.5	6	DKA27CFX	DKA27A3CX	DKA2771X
28LM	25SM			M 33×2	33.1	39	3.5	8	DKA33CFX	DKA33A3CX	DKA3371X
35LM	30SM			M 42×2	42.1	49	3.5	12	DKA11/4CFX	DKA11/4A3CX	DKA11/471X
42LM	38SM			M 48×2	48.1	55	3.5	15	DKA11/2CFX	DKA11/2A3CX	DKA11/271X