

SKINNER 7000 Series Manual Reset Four-Way Pilot Operated Valves

SPECIFICATIONS

Mechanical Characteristics

Standard Materials of Construction

- Body—Brass or Stainless Steel (430)
- Seals—NBR seals
- Sleeve Tube—Stainless Steel (303 or 304)
- Plunger—Stainless Steel (430FR)
- Shading Ring—Copper
- Stop—Stainless Steel (430FR)
- Springs—Stainless Steel (18-8)
- Pilot Orifice—Stainless Steel (303)

Compatible Fluids

- Depending on the valve used, most common media including air, inert gases or petroleum products.

Electrical Characteristics

Voltages

- DC—12, 24
- AC—110/50-120/60, 220/50-240/60

Power Consumption

- 10 watts

Agency Approvals

- cUL approval.

Miscellaneous

Maximum Ambient Temperature

- 131°F

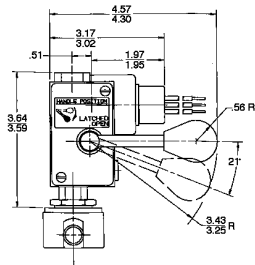
PILOT OPERATED ALUMINUM VALVES—NBR SEALS

Pipe Size NPT	Orifice (inch)	Cv Factor	Operating Pressure Differential (PSI)				Max. Fluid Temp. (F)	No-Voltage Release Pressure Vessel Number	Electrically Tripped Pressure Vessel Number	Const. Ref.	
			(PSI) Min.*	Maximum							
				AC Ratings		DC Ratings					
				10 watt	22 watt	10 watt					22 watt
1/4"	1/4	1	15	150			165	70419AN2NNVR	70419AN2NNET	25	

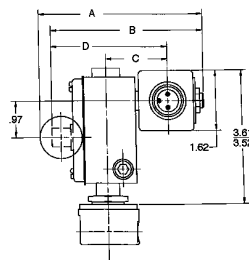
* Pilot operated valves require the minimum pressure differential specified for proper valve operation.

** GP=General Purpose Valves. See page 136 for additional agency approval information.

DRAWINGS



Dimension	No-Voltage Release	Electrically Tripped
A	4.64	4.40
B	4.31	4.07
C	1.79	1.59
D	3.26	3.06



#25