

# SKINNER B-Series

## General Purpose Two-Way Direct Acting Valves

### SPECIFICATIONS

#### Mechanical Characteristics

##### Standard Materials of Construction

- Body—Stainless Steel (303)
- Seals—NBR, FKM
- Sleeve—304 Stainless Steel
- Plunger—430F Stainless Steel
- Stop—430 FR Stainless Steel
- Springs—Stainless Steel (18-8)
- Shading Ring—Copper (AC only)
- Orifice 303 Stainless Steel

##### Compatible Fluids

- Lubricated Air, non-Lubricated Air, Inert Gases, Water, Steam, Hydraulic Fluids, Petroleum Products, Freons, and additional fluids compatible with materials of construction.

Note: Use with Steam and some Petroleum Products normally requires a plunger seal material modification. Consult Skinner Valve to specify a suitable material.

##### Minimum Operating Pressure Differential

- 0 PSI

#### Electrical Characteristics

##### Voltages

- DC—12, 24, 120
- AC—24/60, 120/60, 240/60 (other voltages available upon request)

##### Power Consumption

- 7 watts

##### Agency Approvals

- UL and CSA approvals are generally available on valves with applicable coil/enclosure combinations. For details consult Skinner Valve.

#### Miscellaneous

##### Vacuum

- Down to 5 microns (0.005 torr, 2x10<sup>-4</sup> in Hg)

##### Operating Speed

- Up to 800 cycles per minute

##### Response Time

- AC—Approximately 4-8 milliseconds to open or close.
- DC—Approximately 10-15 milliseconds to open, 6-12 milliseconds to close.

### DIRECT ACTING STAINLESS STEEL VALVES—NORMALLY CLOSED, NBR SEALS

Pipe Size	Orifice Diameter	Cv Factor	Max. Operating Pressure Differential (PSI)		Class A Taped Coil		Const. Ref.	Class B Taped 1/2" NPT Conduit*	Const. Ref.
			AC	DC	Grommet Enclosure	1/4" NPT Conduit			
1/8" NPT*	1/32	0.019	400	400	B2DA1400	B2DB1400	113	B2TBE1400	29
	3/64	0.045	250	250	B2DA1250	B2DB1250	113	B2TBE1250	29
	1/16	0.065	175	175	B2DA1175	B2DB1175	113	B2TBE1175	29
	1/8	0.24	50	-	B2DA1052	B2DB1052	113	B2TBE1052	29
	1/8	0.24	-	25	B2DA1026	B2DB1026	113	B2TBE1026	29

### DIRECT ACTING STAINLESS STEEL VALVES—NORMALLY OPEN, FKM SEALS

Pipe Size	Orifice Diameter	Cv Factor	Max. Operating Pressure Differential (PSI)		Class A Taped Coil		Const. Ref.	Class B Taped 1/2" NPT Conduit*	Const. Ref.
			AC	DC	Grommet Enclosure	1/4" NPT Conduit			
1/8" NPT	1/32	0.019	400	400	B11DK1400	B11DM1400	114	B11TME1400	30
	3/64	0.054	200	200	B11DK1200	B11DM1200	114	B11TME1200	30
	3/32	0.13	40	40	B11DK1040	B11DM1040	114	B11TME1040	30

\* Note: B Series valves with Class B taped coils and 1/2" NPT conduit are UL approved.

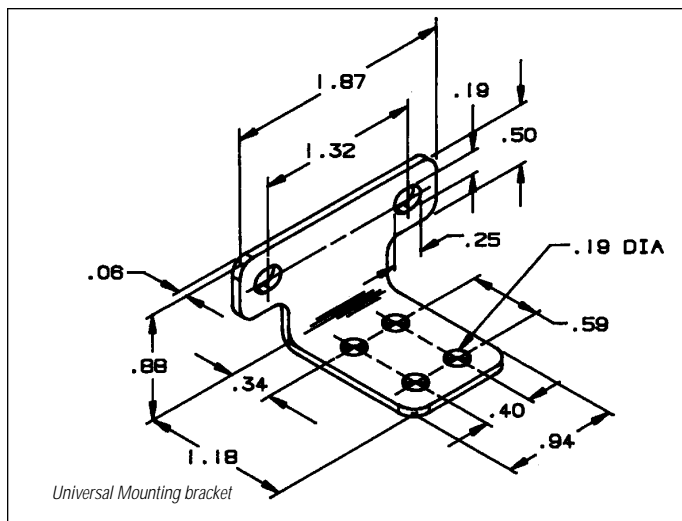
# B-Series General Purpose Two-Way Direct Acting Valves

Valve Options & Accessories

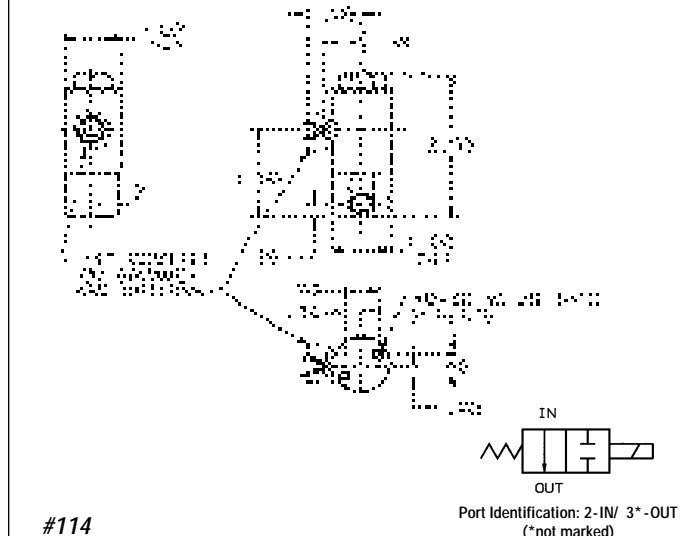
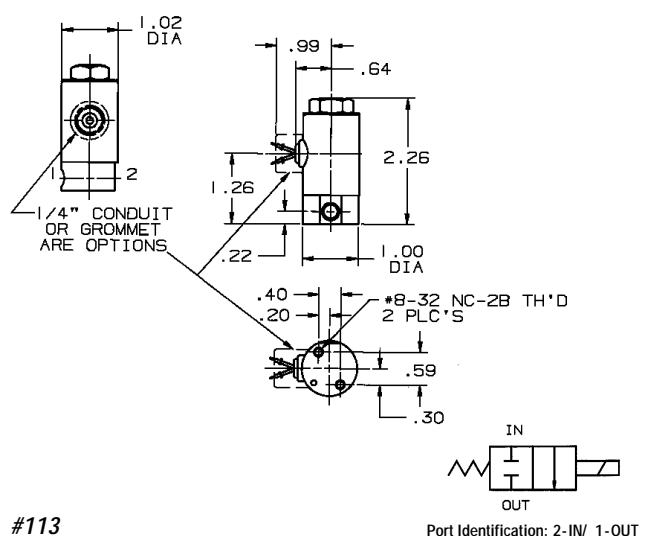
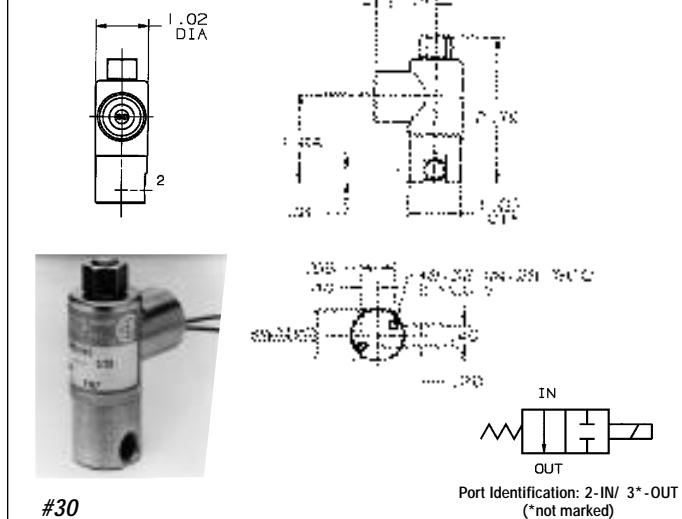
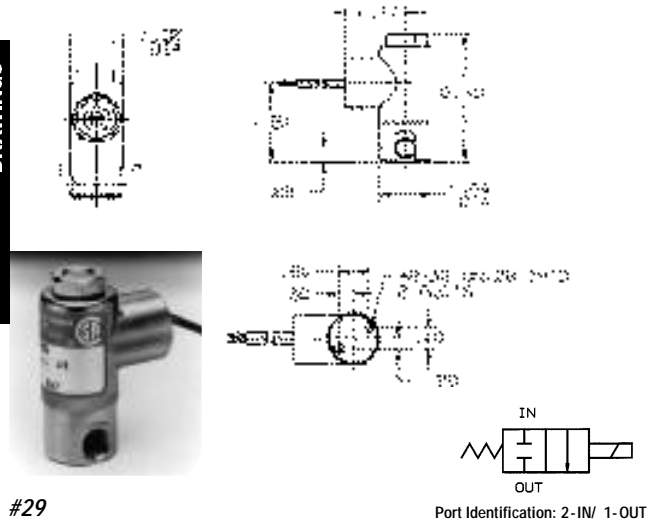
Optional Features	Option Code
Molded Class B leaded coil	LB
Molded Class B tab coil	TB
Molded Class H leaded coil	LH
Yoke	ET
Slotted enclosure for molded coils	EB

Accessories	Part No.
Universal mounting bracket	B19-006
Wrench nut	B99-007

For ordering instructions see Ordering Information section on page 10.



DRAWINGS



Two-Way Solenoid Valves