

316L St. Steel valves for actuator control

3/2 5/2

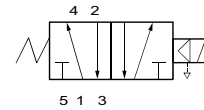
Applications

Directional control and fail/safe function in valve actuator circuits in corrosive and hazardous environment.

Solenoid pilots for main stage valves in corrosive and hazardous locations.

Port size	Orifice (mm)	Flow factors (L/min) Qn	Admissible differential pressure bar			Fluid temp. °C		Seat disc	Reference numbers				Power consumption (W)		Wt. (g)	El. Part Group *	Dim ref.
			Min	Max		Min	Max		Global valve reference	Valve reference no.		Housing	Coil	DC			
NPT				DC	AC												

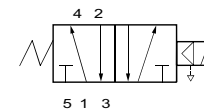
Pilot operated - Integrated pilot



316L Stainless Steel body/NAMUR interface

1/4 - 1/8	4	600	2	10	10	-25	80	NBR	2341NRKDJNM1	U341N0150	1	A2	488980	2	2.5	2	-	1	7575
-----------	---	-----	---	----	----	-----	----	-----	--------------	------------------	---	-----------	---------------	---	-----	---	---	---	------

Pilot operated



316L Stainless Steel body/NAMUR interface

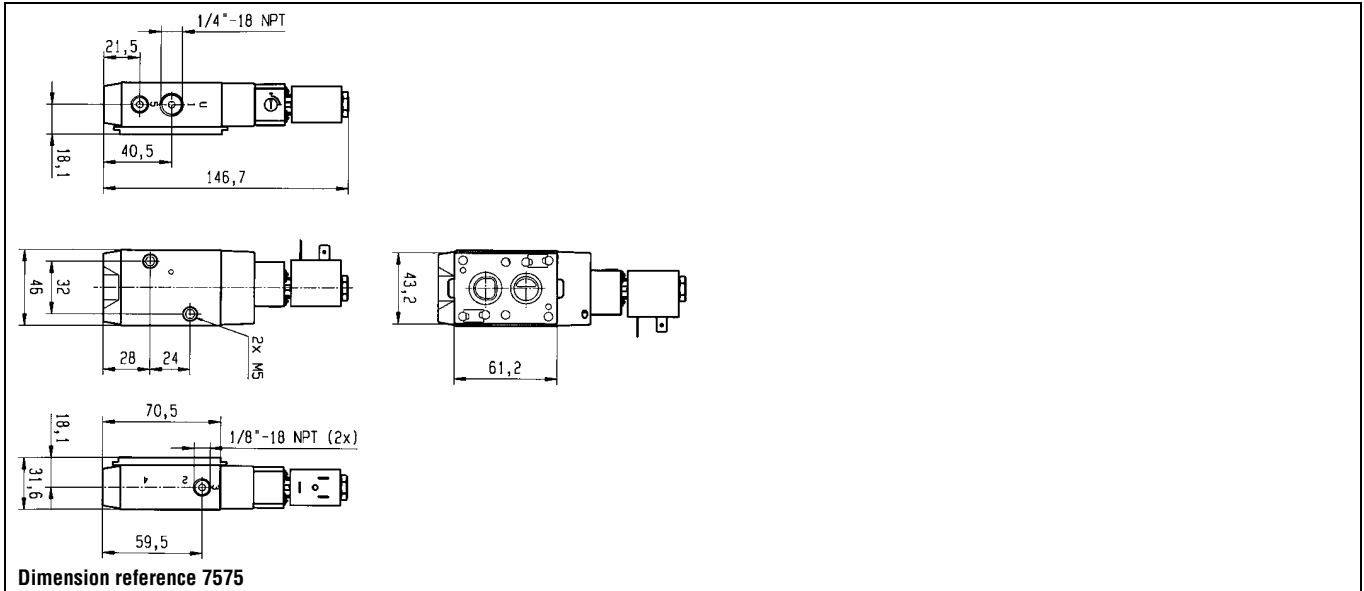
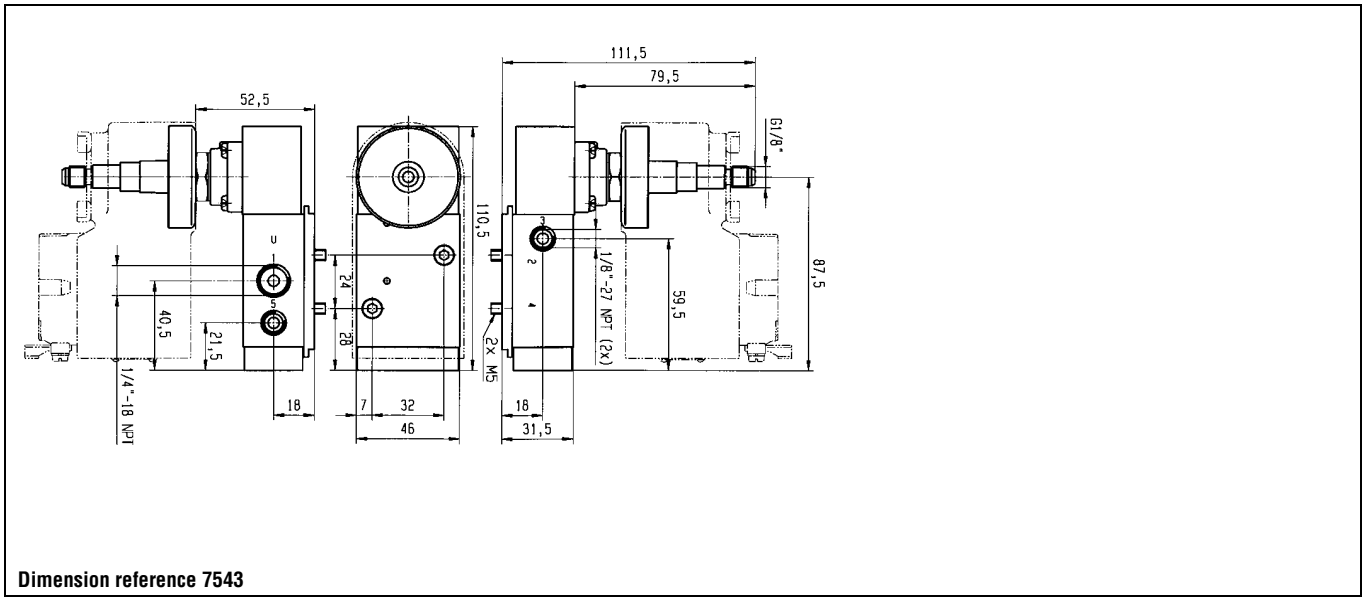
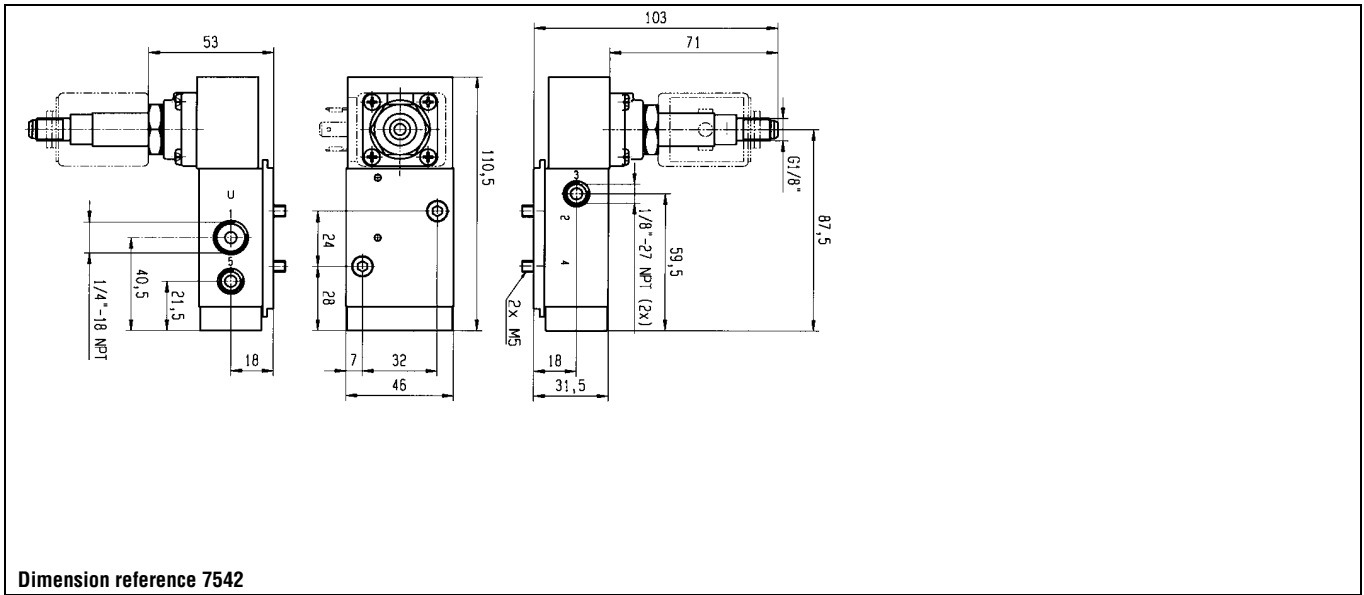
1/4 - 1/8	4	600	2	10	10	-25	75	NBR	7341NRKDJN00	U341N3150	2	NL	481865	9	8	-	2	7542
	4	600	2	10	10	-25	75	NBR		E0		481000	8	8	-	2		
	4	600	2	10	10	-25	80	NBR	7341NRKDJN1D	U341N31501D	2	-	483250	8	8	-	5	7543

Table continued on page 310

Notes:

- * See Electrical Parts Group table at end of section
- 1. Manual override standard
- 2. Valve with NPT ports

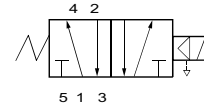
316L Stainless Steel valves for actuator control - 3/2 or 5/2 valves - NAMUR interface



316L Stainless Steel valves for actuator control - 3/2 or 5/2 valves - NAMUR interface

Port size	Orifice (mm)	Flow factors (L/min) Qn	Admissible differential pressure bar			Fluid temp. °C		Seat disc	Reference numbers				Power consumption (W)		Wt. (g)	El. Part Group *	Dim ref.
			Min	Max	DC	AC	Min		Max	Global valve reference	Valve reference no.	Housing	Coil	DC			
NPT																	

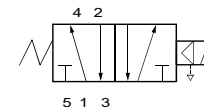
Pilot operated



316L Stainless Steel body/NAMUR interface

1/4 - 1/8	4	600	2	10	10	-25	80	NBR	7341NRKDJN92	U341N3192	1	NL	483580.01	0.4	-	-	7	7544
	4	600	2	10	10	-25	75	NBR	7341NRKDJN95	U341N3195	1	-	492965.01	0.8	-	-	10	7696
	4	600	2	10	10	-25	75	NBR				-	492310	6	6	-	10	

Pilot operated - Integrated pilot



316L Stainless Steel body/NAMUR interface

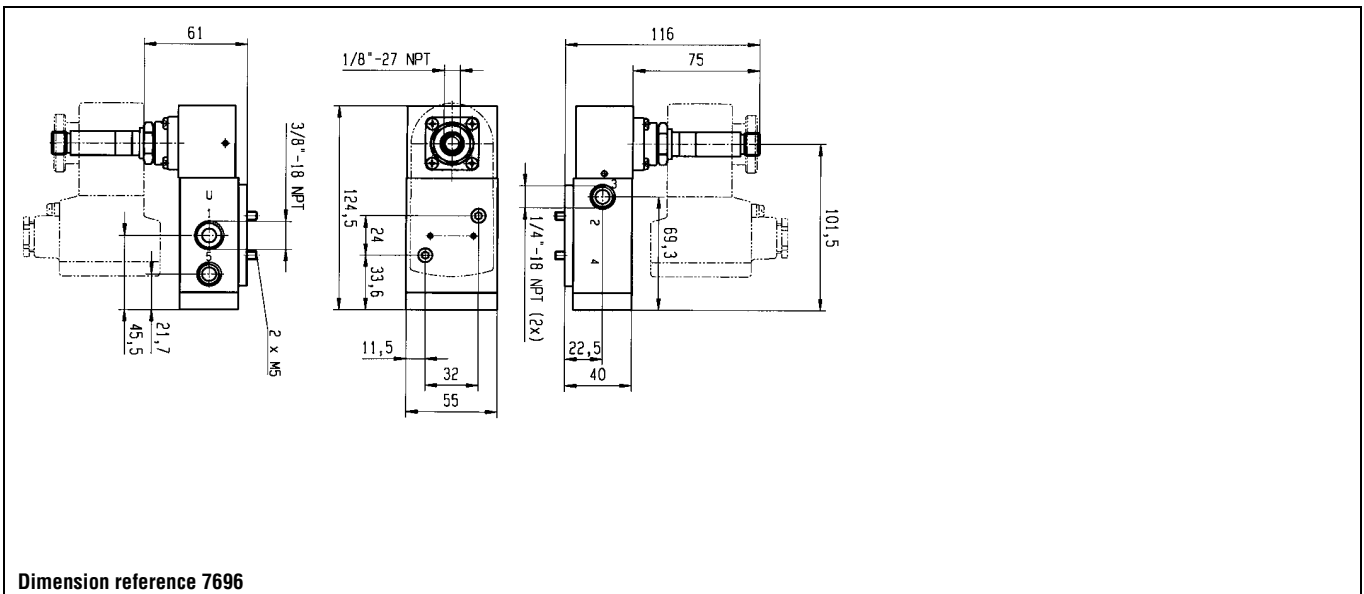
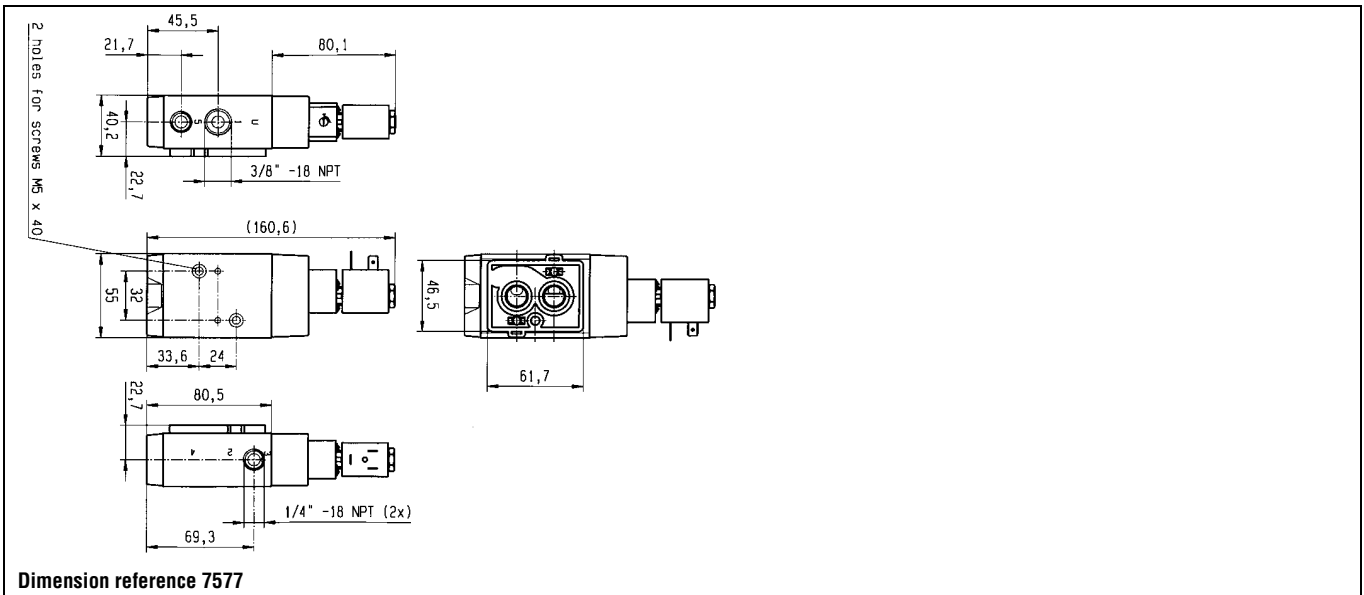
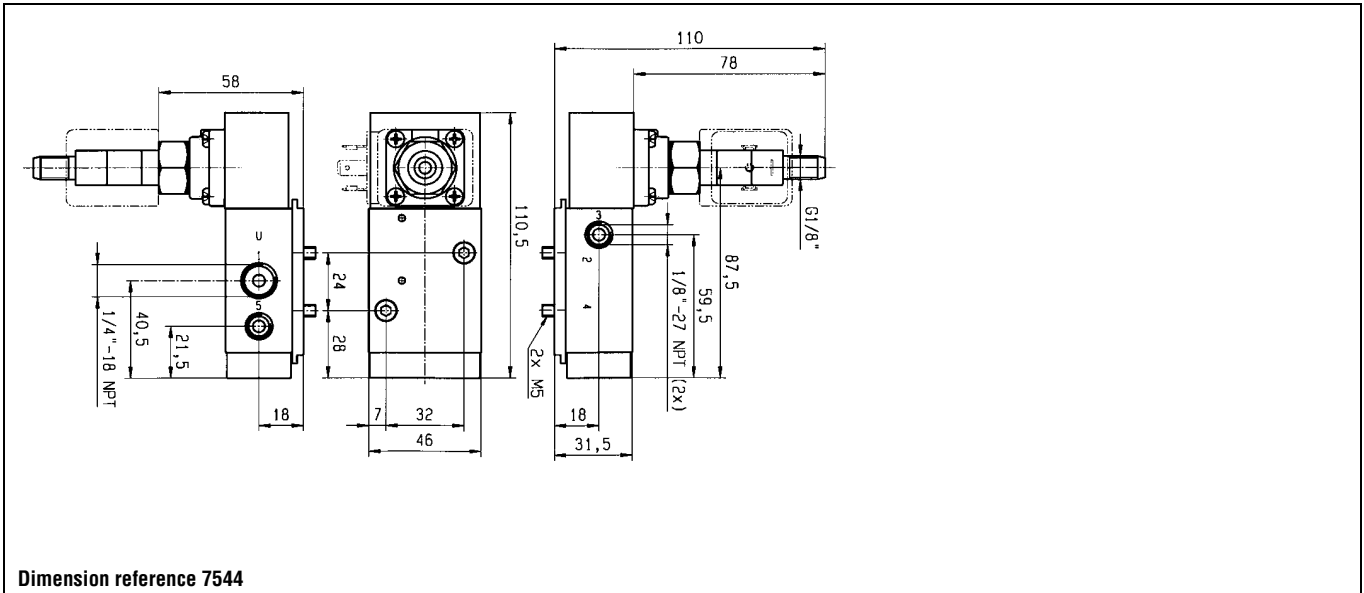
3/8 - 1/4	8	1400	2	10	10	-25	80	NBR	2341NRKNNM1	U341N0250		A2	488980	2.5	2	-	1	7577
-----------	---	------	---	----	----	-----	----	-----	-------------	------------------	--	----	---------------	-----	---	---	---	------

Table continued on page 312

Notes:

- * See Electrical Parts Group table at end of section
- 1. Valve with NPT ports

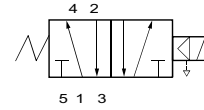
316L Stainless Steel valves for actuator control - 3/2 or 5/2 valves - NAMUR interface



316L Stainless Steel valves for actuator control - 3/2 or 5/2 valves - NAMUR interface

Port size	Orifice (mm)	Flow factors (L/min)	Admissible differential pressure bar			Fluid temp. °C		Seat disc	Reference numbers				Power consumption (W)		Wt. (g)	El. Part Group *	Dim ref.
			Min	Max	DC	AC	Min		Max	Global valve reference	Valve reference no.	Housing	Coil	DC			
NPT		Qn															

Pilot operated



316L Stainless Steel body/NAMUR interface

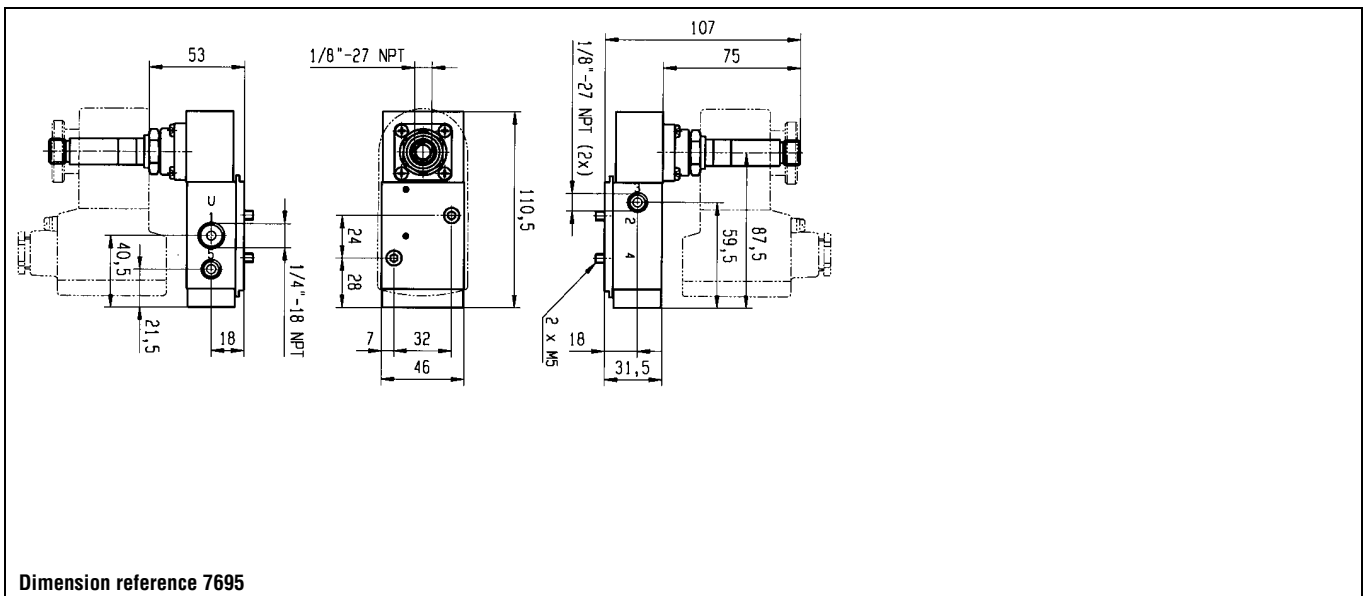
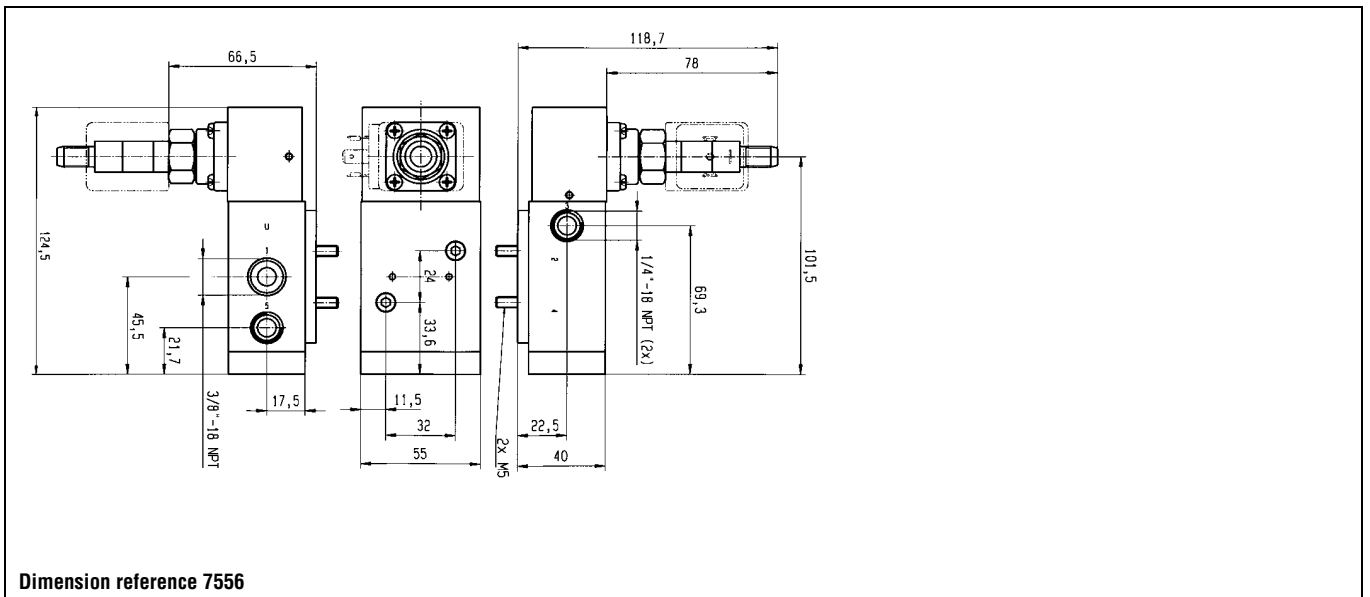
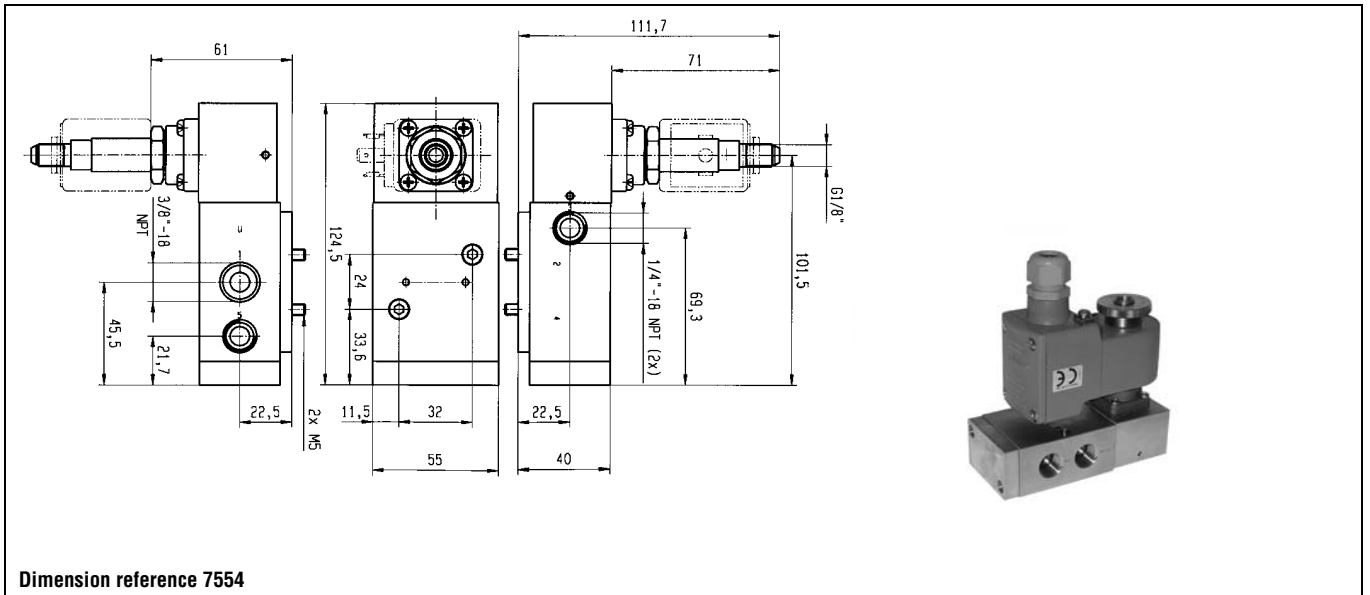
3/8 - 1/4	8	1400	2	10	10	-25	80	NBR	7341NRKNNN00	U341N3250	1	NL	481865	9	8	-	2	7554
	8	1400	2	10	10	-25	80	NBR		E0		E0	481000	8	8	-	2	
	8	1400	2	10	10	-25	55	NBR	7341NRKNNN92	U341N3292	1	NL	483580.01	0.4	-	-	7	7556
	8	1400	2	10	10	-25	75	NBR	7341NRKNNN95	U341N3295	1	-	492965.01	0.8	-	-	10	7695
	8	1400	2	10	10	-25	75	NBR		-		-	492310	6	6	-	10	

Table continued on page 314

Notes:

- * See Electrical Parts Group table at end of section
- 1. Valve with NPT ports

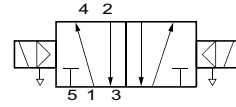
316L Stainless Steel valves for actuator control - 3/2 or 5/2 valves - NAMUR interface



316L Stainless Steel valves for actuator control - 3/2 or 5/2 valves - NAMUR interface

Port size	Orifice (mm)	Flow factors (L/min)	Admissible differential pressure bar			Fluid temp. °C		Seat disc	Reference numbers				Power consumption (W)		Wt. (g)	El. Part Group *	Dim ref.
			Min	Max	DC	AC	Min		Max	Global valve reference	Valve reference no.	Housing	Coil	DC			
NPT		Qn															

Two solenoids and main pressure supply



316L Stainless Steel body/NAMUR interface

1/4 - 1/8	4	400	2	10	10	-25	80	NBR	7347NRKDHNMO	U347N3150	1	NL	481865	2	9	8	-	2	7545
	4	400	2	10	10	-25	80	NBR		E0			481000	2	8	8	-	2	
3/8 - 1/4	4	400	2	10	10	-25	55	NBR	7347NRKDHN92	U347N3192	1	NL	483580.01	2	0.4	-	-	7	7546
	8	1400	2	10	10	-25	80	NBR	7347NRKNNN00	U347N3250	1	NL	481865		9	8	-	2	7557
	8	1400	2	10	10	-25	80	NBR		E0			481000		8	8	-	2	

Notes:

* See Electrical Parts Group table at end of section

1. Valve with NPT ports

2. Please order two housings and coils for each valve

316L Stainless Steel valves for actuator control - 3/2 or 5/2 valves - NAMUR interface

