

GOLD RING Series 48 Two Position Four-Way Valves

SPECIFICATIONS

Mechanical Characteristics

Standard Materials of Construction

- Body-Brass
- Seals-NBR
- Plunger and Pole Piece-430FR Stainless Steel
- Plunger Tube-305 Stainless Steel
- Springs-302 Stainless Steel
- Shading Coil-Copper (Brass Bodies)
- Disc Holder-Celcon

Compatible Fluids

- Series 48 valves are ideal for control of a variety of media including gases, fluid, light oils and other clean flowing media compatible with brass.

Electrical Characteristics

Voltages

- DC-6, 12, 24, 120, 125 (other voltages available upon request)

- AC-24/60, 110/120-50/60, 220/240-50/60, 440/480-50/60

Coil

- Class F Standard, Class H Available

Agency Approvals

- Standard valves with general purpose or explosion proof solenoid enclosures are UL Listed and CSA Certified. For details, consult factory.

Miscellaneous

Temperature Ratings (media as listed)

- AC Voltages: 180°F max.
- DC Voltages: 104°F max.
- Ambient: 32-77°F (standard)
- For temperature variations, consult the factory.

Installation

- For proper operation, valves should be mounted vertical and upright. Product and mounting dimensions shown are nominal. For certified dimensions, consult factory.

Applications

- Used in a variety of applications including: Pilots, Air Vises, Air Motors and Dampers.

Operating Specifications

- De-energized-Pressure to "A"; "B" to exhaust.
- Energized-Pressure to "B"; "A" to exhaust.
- Avoid exhaust flow restriction.

BRASS VALVES—UNIVERSAL (PRESSURE AT P), NBR SEALS

AC VALVE SPECIFICATIONS

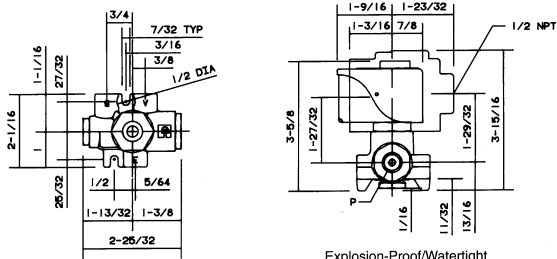
NPT Pipe Size	Orifice Diameter		Flow Factor		Operating Pressure Differential						Max. Temp.		AC Watt	Const. Ref.	Valve Part Number		
	inch	mm	Cv	Kv	Min. (PSI/Bar)	Max. (MOPD)						°F				°C	
						Air, Inert Gas (PSI/BAR)		Water (PSI/Bar)		Light Oil 300SSU (PSI/BAR)							
1/4	1/16	1.59	.09	0.08	10	0.69	150	10.34	150	10.34	150	10.34	180	82.22	11.0	83	04F48S2106ACF
	3/32	2.38	.09	0.08													

BRASS VALVES—UNIVERSAL (PRESSURE AT P), NBR SEALS

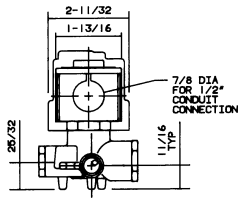
DC VALVE SPECIFICATIONS

NPT Pipe Size	Orifice Diameter		Flow Factor		Operating Pressure Differential						Max. Temp.		AC Watt	Const. Ref.	Valve Part Number		
	inch	mm	Cv	Kv	Min. (PSI/Bar)	Max. (MOPD)						°F				°C	
						Air, Inert Gas (PSI/BAR)		Water (PSI/Bar)		Light Oil 300SSU (PSI/BAR)							
1/4	1/16	1.59	.09	0.08	10	0.69	100	6.90	100	6.90	100	6.90	104	40	11.2	83	04F48S2106A3F
	3/32	2.38	.09	0.08													

DRAWINGS



Explosion-Proof/Watertight
Shown in Outline



#83

To choose a solenoid for your valve, refer to the AC or DC chart found on the flap attached to the back cover of this catalog.